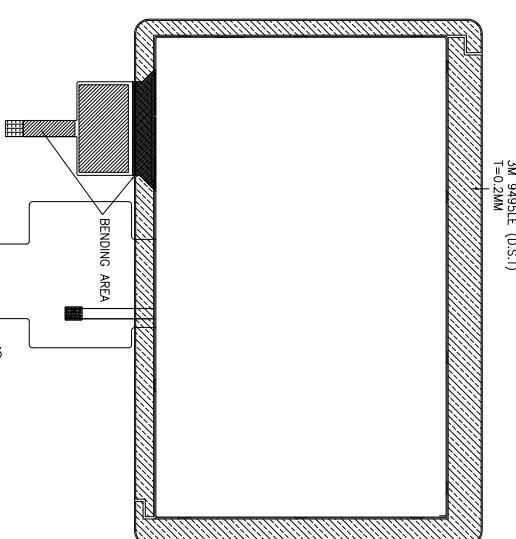
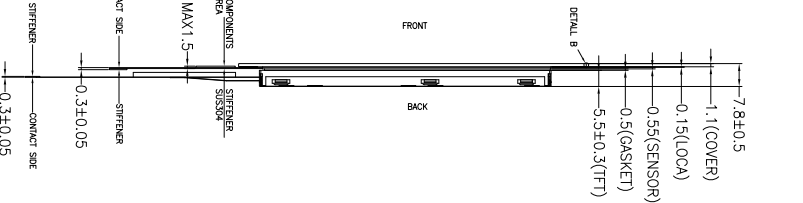
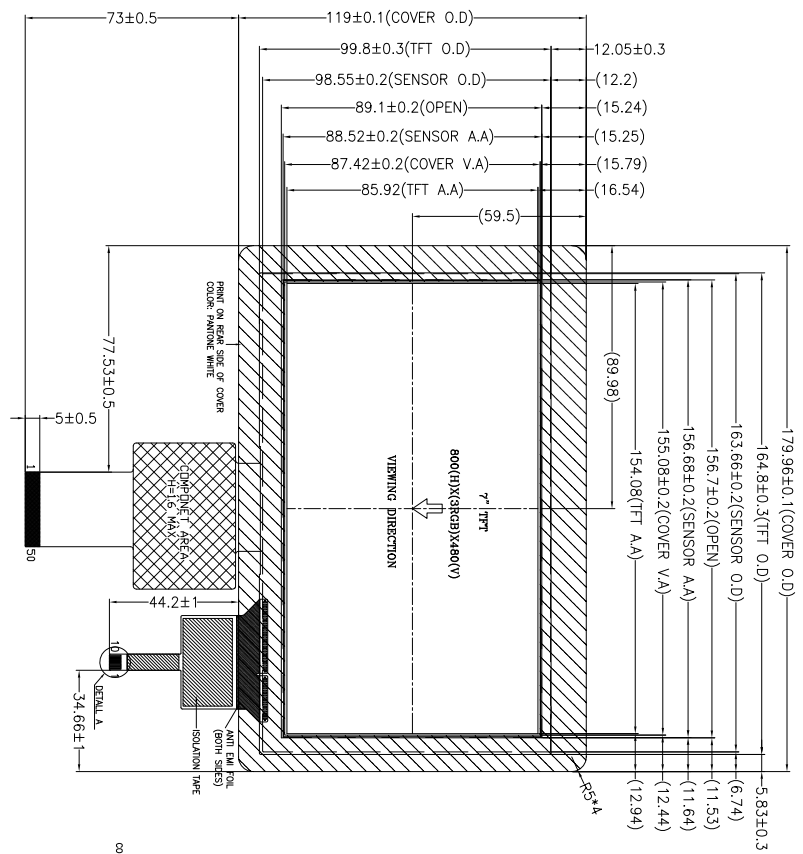


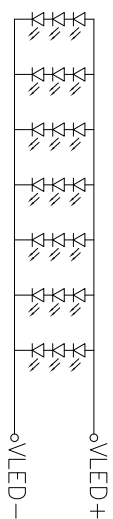
LCM I/O PINS:

PIN NO.	SYMBOL	PIN NO.	SYMBOL
1	VLED+	26	G1
2	VLED+	27	G0
3	VLED-	28	R7
4	VLED-	29	R6
5	GND	30	R5
6	VCC	31	R4
7	VCC	32	R3
8	MODE	33	R2
9	DE	34	R1
10	VSYNC	35	R0
11	HSYNC	36	GND
12	B7	37	CLK
13	B6	38	GND
14	B5	39	LR
15	B4	40	UD
16	B3	41	VCC
17	B2	42	VCC
18	B1	43	NC
19	B0	44	RESET
20	G7	45	NC
21	G6	46	NC
22	G5	47	DITHB
23	G4	48	GND
24	G3	49	NC
25	G2	50	NC

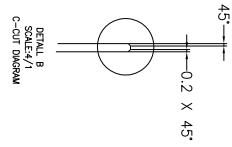
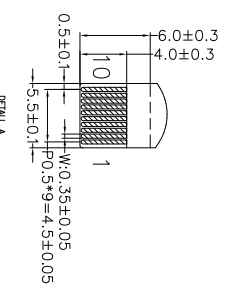


CTP I/O PINS:

1	VSS
2	VDD
3	SCL
4	NC
5	SDA
6	NC
7	/RST
8	NC
9	/INT
10	VSS



Backlight LED Circuit



NOTES FOR CTP:

- 7.0 INCH PROJECTIVE CAPACITIVE TOUCH PANEL.
- OPERATING VOLTAGE: VDD=3.3V.
- COVER GLASS + SENSOR GLASS + FPCA.
- RESOLUTION: 1792 X 1024 DOTS.
- IC DRIVER: FT5426 (SMT).
- MULTI FINGER: UP TO 5.
- HARDNESS OF COVER SURFACE: 7H.

NOTES FOR TFT:

- DISPLAY TYPE: TFT, TRANSMISSIVE, POSITIVE
- OPERATING VOLTAGE: VCC=3.3V
- VIEWING DIRECTION: 12 O'CLOCK.
- IC DRIVER: HX8264+HX8664
- OPERATING TEMP: -20°C ~ 70°C.
- STORAGE TEMP: -30°C ~ 80°C.
- LED BACKLIGHT: 21-CHIP WHITE LED, If=180mA, Vf=9.6V.
- LCM SURFACE LUMINANCE: 340cd/m<sup>2</sup>.
- GENERAL TOLERANCE: ±0.2.
- RoHS COMPLIANT.

Display Future Ltd.

01	First issue	2017.02.14	DRAWN BY:	-	20170214	SCALE : 1/1	MODULE P/N:
VER:	REVISED DESCRIPTION	DATE	CHECKED BY:		APPROVED BY:	UNIT:	DF-IFC0095FB-M2
			VERSION NO:	01			DESCRIPTION:
							TFT MODULE