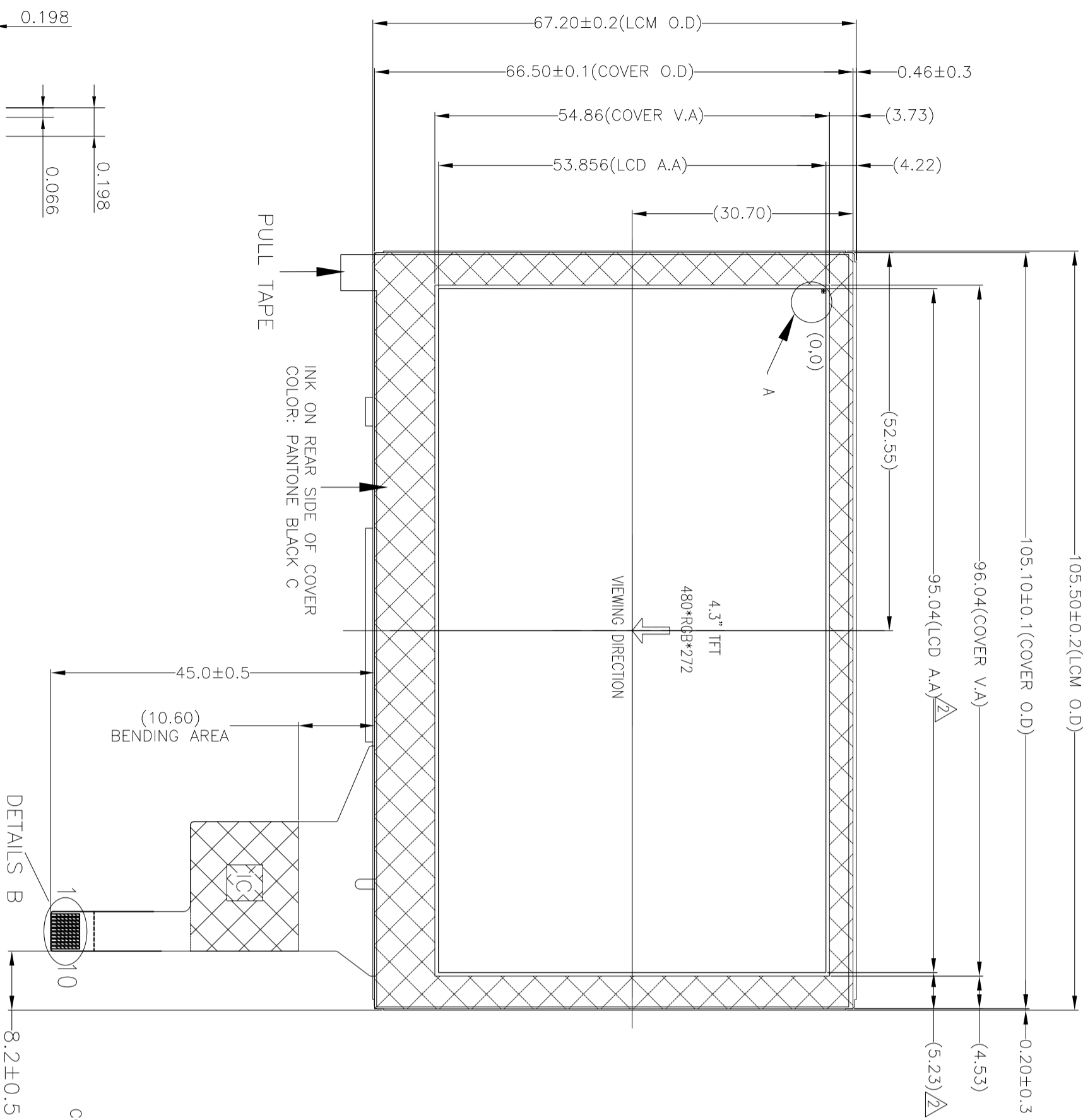
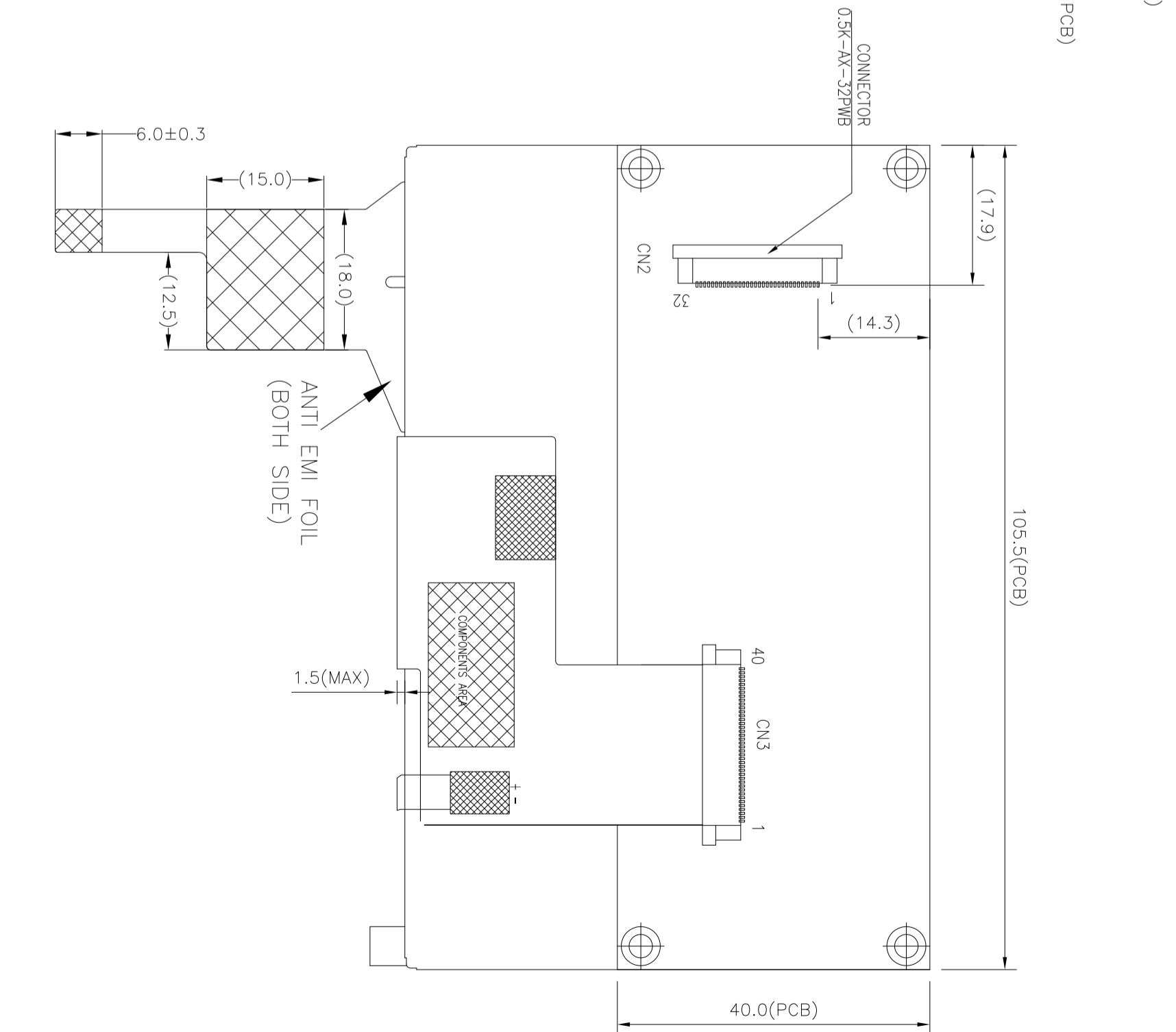


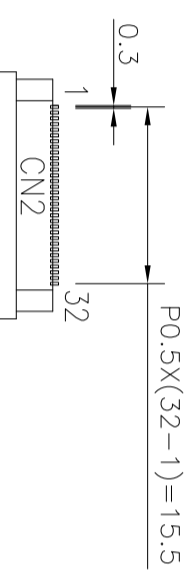
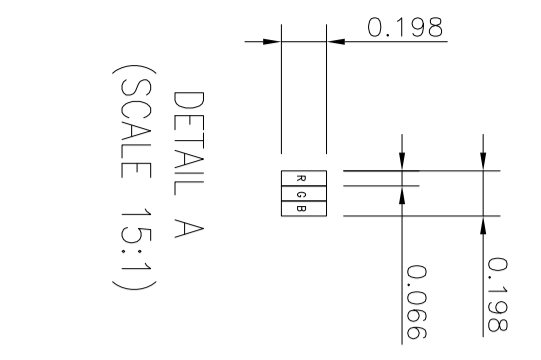
NO.	SYMBOL	16-BIT MODE(CN2)
1	GND	
2	VCC	
3	BL-E	
4	RS	
5	/WR	
6	/RD	
7	DB0	
8	DB1	
9	DB2	
10	DB3	
11	DB4	
12	DB5	
13	DB6	
14	DB7	
15	DB8	
16	DB9	
17	DB10	
18	DB11	
19	DB12	
20	DB13	
21	DB14	
22	DB15	
23	NC	
24	NC	
25	/CS	
26	/RST	
27	NC	
28	NC	
29	NC	
30	NC	
31	NC	
32	DISP	

FPC ASSIGNMENT FOR CTP:

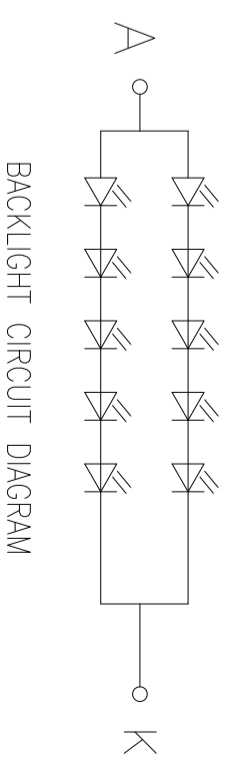
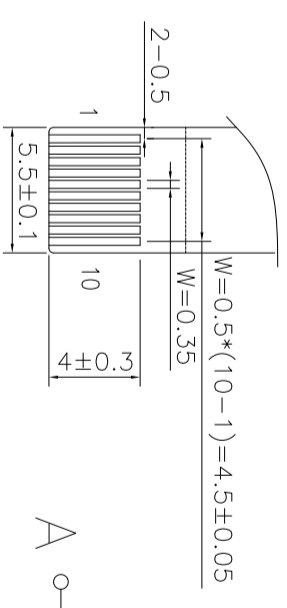
1	VSS
2	VDD
3	SCL
4	NC
5	SDA
6	NC
7	/RST
8	NC
9	/INT
10	VSS



DETAIL A (SCALE 15:1)



DETAIL B (SCALE 2:1)



BACKLIGHT CIRCUIT DIAGRAM

NOTES FOR CTP:

- 4.3" PROJECTIVE CAPACITIVE TOUCH PANEL.
- OPERATING VOLTAGE: VDD=IOVDD=3.3V.
- COVER GLASS + SENSOR GLASS + FPCA.
- RESOLUTION: 480 X 272 DOTS.
- IC DRIVER: FT5446DQS (SMT); I²C INTERFACE.
- MULTI-FINGER: UP TO 5.
- HARDNESS OF COVER SURFACE: 7H.

NOTES FOR TFT:

- DISPLAY TYPE: TN TFT/TRANSMISSIVE/NORMALLY WHITE
- VIEWING DIRECTION: 12:00 O'CLOCK
- OPERATING VOLTAGE: VCC=3.3V(TYP)
- OPERATING TEMP: -20°C -- +70°C
- STORAGE TEMP: -30°C -- +80°C
- LCD CONTROLLER: SSD1963
- INTERFACE: 8/16-BIT 8080 MPU.
- BACKLIGHT: WHITE LED.
- TOP POLARIZER SURFACE TREATMENT: ANTI-GLARE.
- GENERAL TOLERANCE: ±0.30mm.
- ROHS COMPLIANT.



Display Future Ltd

DRAWN BY: 2017.09.25 SCALE : 1/1

CHECKED BY: APPROVED BY: UNIT: mm

VERSION NO: 02 DESCRIPTION: DF-TFC0430FW-M3

TFT & CTP MODULE

https://www.displayfuture.com

VER.	REVISED DESCRIPTION	REVISER	DATE
02	CORRECT THE DIMENSION OF LCD AA		2017.11.10
01	FIRST ISSUE		2017.09.25