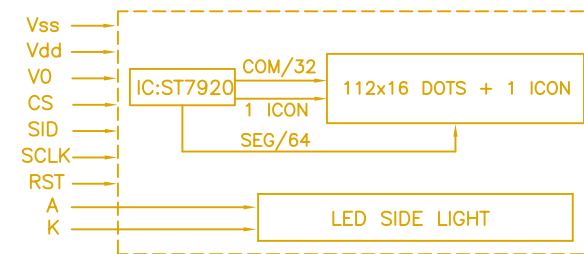
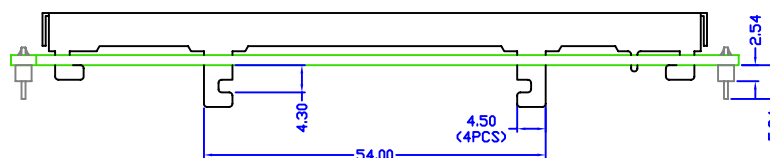
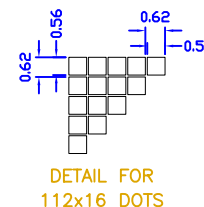
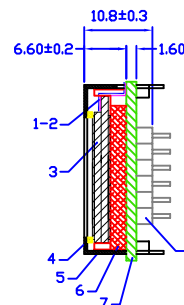
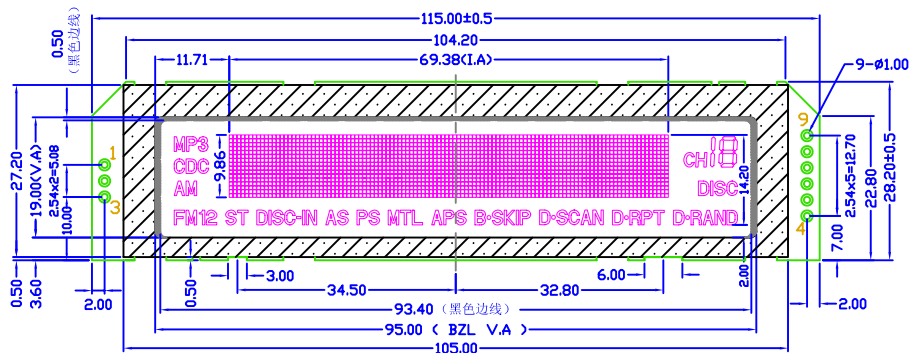


REV.	DESCRIPTION	BY	DATE
-	RELEASED	P.L	08/19/04
A	ECO#041102	P.L	11/09/04



PIN ASSIGNMENT		
PIN#	SYMBOL	Description
1	Vss	Ground
2	Vdd	Supply voltage for logic(+5V)
3	Vo	Input voltage for LCD(0~3.5V)
4	CS	Hi Chip enable Li chip disable
5	SID	Serial data input
6	SCLK	Serial clock signal
7	RST	Reset signal
8	LED(+)	Slide light anode(3.1V)
9	LED(-)	Slide light cathode

NOTES:

- ALL DIMENSIONS IN mm.
- DISPLAY TYPE: FSTN/POSITIVE
- POLARIZER MODE: TRANSMISSIVE
- VIEWING DIRECTION: 12:00
- DRIVE METHOD: 1/33 DUTY; 1/6 BIAS
- OPERATING TEMPERATURE: -20°C TO +70°C
- STORAGE TEMPERATURE: -30°C TO +80°C.
- CONNECTOR: HEAT SEAL
- 装配时将扣板4个角位上的4个短扣脚扭转扣于PCB板上, 然后上锡将其焊牢以保证其牢固.
- 扣板扭脚扭转后产生变形会超出PCB板边缘, 需保证装配完成后扭脚处的尺寸满足模块总宽度尺寸: 28.2±0.5mm.
- 为解决发光亮点问题背光灯的发光区域减少, 同时因模块本身装配空间不够, 故装配后LCD两端及上端均可能会出现黑色边线(如图所示), 此黑边只要符合尺寸控制要求即可.

8	3C03CNT-2/-3	连接插针	2	3 PIN、6 PIN各1	
7	4701PCB	线路板	1	FR4	
6	4701LED	背光灯	1	侧光灯	颜色: 绿色
5	4701BZL	金属框	1		
4		单面胶	2		置于BZL与LCD间作缓冲
3	4701LCD	液晶显示屏	1	FSTN/POSITIVE	
2	4701HSC	热压导电薄膜	1		
1		绝缘单面贴纸	1		
序号	图号	名称	数量	规格/材料	备注

TOLERANCE		
>0~6	±0.10	>120~300 ±0.50
>6~30	±0.20	>300~500 ±0.80
>30~120	±0.30	>500 ±1.20
// ⊥ ◎ ±0.10; ANGLE: ±3.0°		

REV: A

SHEET: 1 OF 1

SCALE: N.T.S. UNITS: MM

APPROVALS: DWN P.L Nov-09

CHK: APP

DO NOT SCALE THIS DRAWING.

PROJECTION

**广州市龙宇电子有限公司**  
Kingtronics Display Technologies Ltd., Co.

DRAWING NO: 4701MOD

MODEL NUMBER: KC4701

DATE: 09-Nov-2004