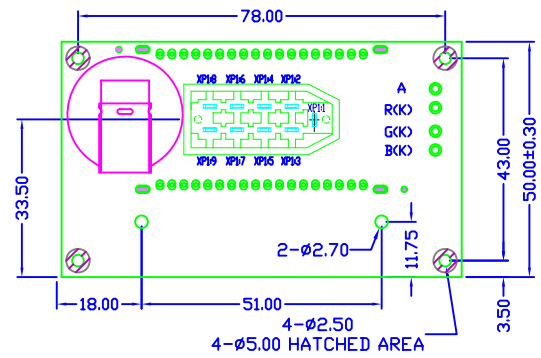
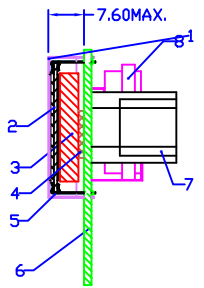
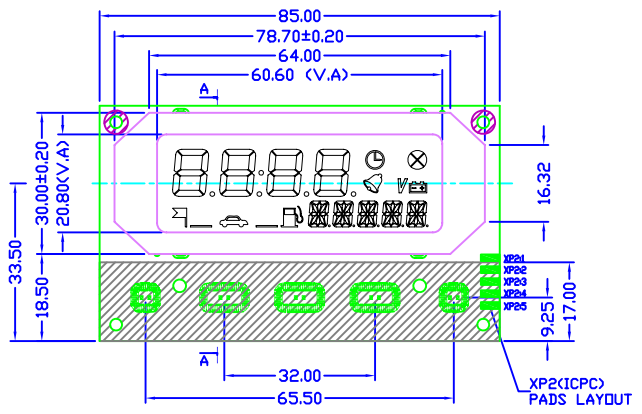
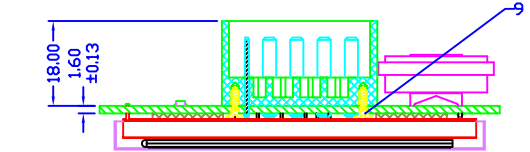
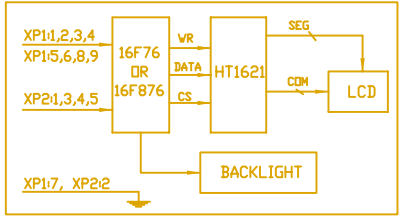


REV.	DESCRIPTION	BY	DATE
-	RELEASED	P.L	07/12/05
A	ECO#021205	P.L	07/30/05
B	ECO#030613	M.L	12/04/05
C	ECO#030822	M.L	01/25/05
D	ECO#040407	P.L	04/20/06



PIN ASSIGNMENT		
PIN	SYMBOL	FUNCTION
XP1:1	FFS	INTERFACE FOR CONNECTOR
XP1:2	K-LINE	
XP1:3	15/1	
XP1:4	OTS	
XP1:5	30	
XP1:6	LIGHT	
XP1:7	GND	
XP1:8	FLS	
XP1:9	SCS	
XP2:1	ICPC	INTERFACE FOR ICPC
XP2:2		
XP2:3		
XP2:4		
XP2:5		

- NOTES**
- ALL DIMENSIONS ARE MILLIMETER
  - LCD TYPE: -1: TN/POSITIVE;  
-2: TN/NEGATIVE
  - FRONT POLARIZER: ANTI-GLARE  
POLARIZER MODE: TRANSMISSIVE/NEGATIVE;  
TRANSFLECTIVE/POSITIVE
  - VIEWING ANGLE: 12:00
  - OPERATING VOLTAGE: 5.0V
  - OPERATING MODE: 1/4 DUTY; 1/3BIAS
  - OPERATING TEMPERATURE: -30°C TO +60°C
  - STORAGE TEMPERATURE: -40°C TO +85°C
  - HATCHED AREA INDICATES WHERE ALL COMPONENTS CAN NOT BE LOCATED
  - 要求用热熔胶打满电池底部与PCB间的空间以改善电池焊片在高频震动下容易脱落的现象。

Item	Drawing NO.	Name	QTY.	Spec/Material	Notes
9		SELF-SCREW	2	ST2.2X6.5	GB/T846-1985
8	2202BAT	BATTERY	1		TYPE:CR2477
7	2202CNT	CONNECTOR	1		
6	2202PCB	PCB ASSEMBLY	1	FR4	
5		单面绝缘贴纸	2	59x10 mm	To protect pins of LCD
4	2202DTP	DOUBLE SIDE TAPE	2		To connect LED&PCB
3	2502LED	BACKLIGHT LED	1	FULL COLOR	TWO END BACKLIGHT
2	2502LCD	LCD DISPLAY	1		LOOK AT THE NOTES 2
1	2202MET	METAL FRAME	1		

TOLERANCE		
>0~6	±0.10	>120~300 ±0.50
>6~30	±0.20	>300~500 ±0.80
>30~120	±0.30	>500 ±1.20
// ⊥ ◎ ±0.10; ANGLE: ±3.0°		

REV: D

SHEET: 1 OF 1

SCALE: N.T.S. UNITS: MM

APPROVALS: DWN P.L DATE: Apr-20

CHK: APP

DO NOT SCALE THIS DRAWING.

PROJECTION:

**广州市龙宇电子有限公司**  
Kingtronics Display Technologies Ltd., Co.

DRAWING NO: 2502MOD

MODEL NUMBER: KC2502

DATE: 20-Apr-2006