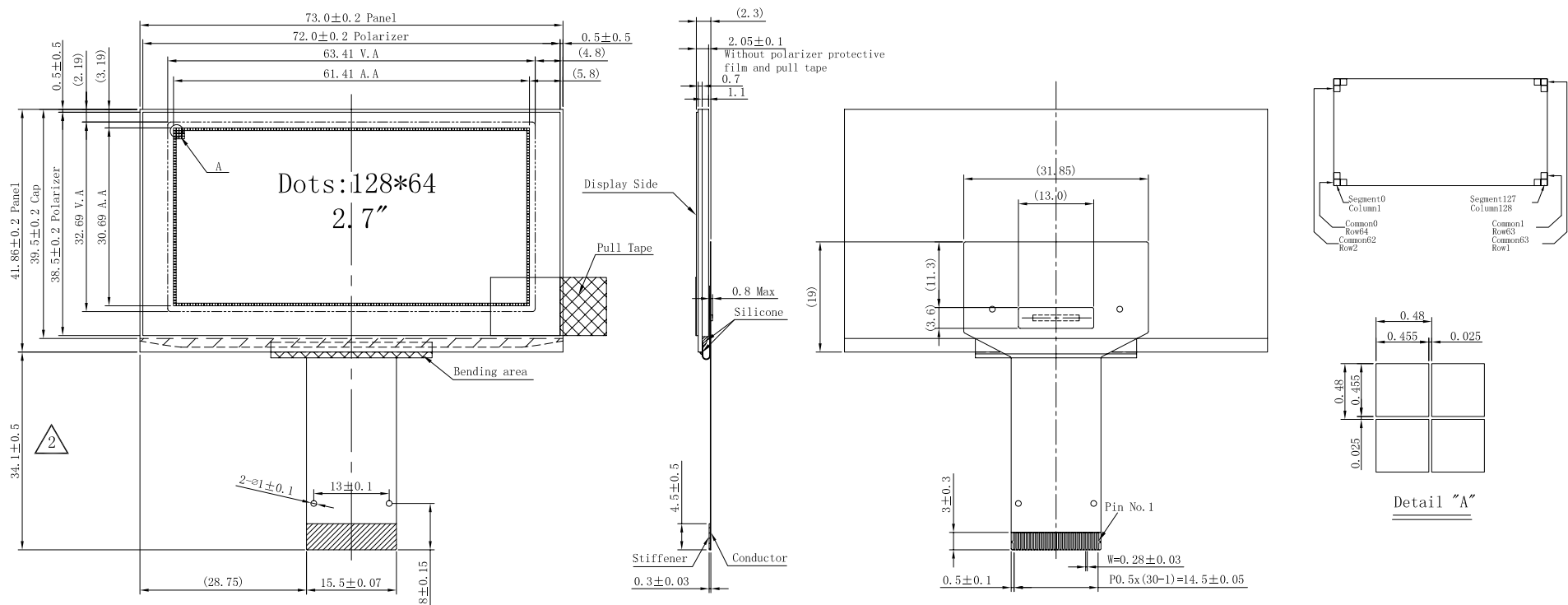


如本印章非红色, 则表明该文件为非受控版本, 不会受到控制和更新. 请使用受控文件.
分发号:

受控章

Rev.	Date	Note
1	2009.06.04	Primary
2	2009.06.25	Modify FPC size



Pin Assignment	
NO.	SYMBOL
1	NC
2	VCC
3	VCOMH
4	IREF
5	D7
6	D6
7	D5
8	D4
9	D3
10	D2
11	D1
12	D0
13	RD
14	R/W
15	D/C
16	RES
17	CS
18	NC
19	BS2
20	BS1
21	VDD
22	NC
23	NC
24	VBREF
25	NC
26	FB
27	VDDb
28	GDR
29	VSS
30	NC

Specification

1. Display: OLED(White)
2. Format: 128*64
3. Driver IC: SSD1305T7R1
4. General Tolerance: ± 0.3
5. Operate temp: $-30^{\circ}\text{C} \sim 70^{\circ}\text{C}$
Storage temp: $-30^{\circ}\text{C} \sim 80^{\circ}\text{C}$
6. DUTY: 1/64
7. RoHS Compliant

Customer Approval Signature	Part Name	Module ass'y	Date	Rev.	Unit	Sheet
	Project Code	0001F	2009.06.25	02	mm	1/1
	Part No.	0001F-MA1-A	DES' D BY	CHK' D BY	CHK' D BY	APPROVED

