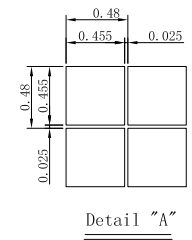
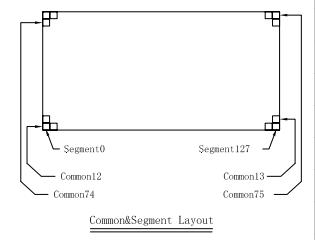
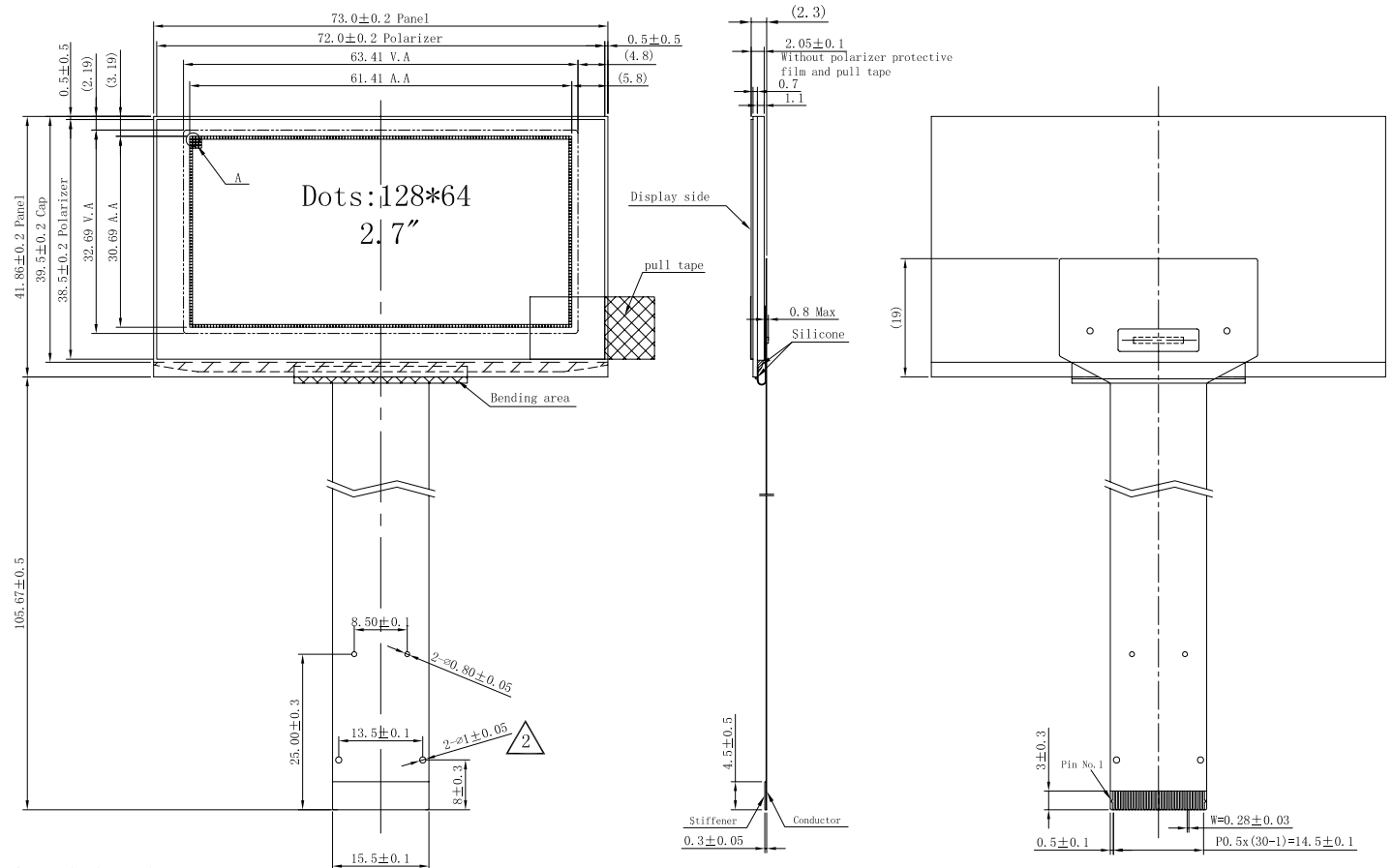


如本印章非红色, 则表明该文件为非受控版本, 不会受到控制和更新. 请使用受控文件.  
分发号:

受控章

Rev.	Date	Note
1	2009. 05. 19	Primary
2	2009. 05. 21	Add FPC Hole For Alignment



Pin Assignment	
NO.	SYMBOL
1	NC
2	VCC
3	VCOMH
4	IREF
5	D7
6	D6
7	D5
8	D4
9	D3
10	D2
11	D1
12	D0
13	E (RD#)
14	R/W# (WR#)
15	D/C#
16	RES#
17	CS#
18	NC
19	BS2
20	BS1
21	VDD
22	NC
23	NC
24	NC
25	NC
26	NC
27	NC
28	NC
29	VSS
30	VSL

- Specification
1. Display: OLED (Green)
  2. Format: 128\*64
  3. Driver IC: SSD1325T6R1
  4. General Tolerance: ±0.3
  5. Operate temp: -30°C ~ 70°C  
Storage temp: -30°C ~ 80°C
  6. DUTY: 1/64
  7. RoHS Compliant

Customer Approval Signature	Part Name	Module ass'y	Date	Rev.	Unit	Sheet
	Project Code	0001E	2009. 05. 21	02	mm	1/1
	Part No.	0001E-MA1-A	DES' D BY	CHK' D BY	CHK' D BY	APPROVED

