



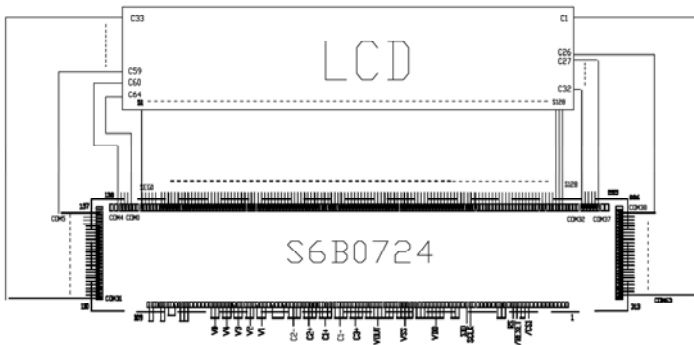
MI12864J-G

FEATURE:

- Display Format:** 128(H)×64(V) dots
- Driving Method:** 1/64 Duty, 1/9 Bias
- Display Type:** STN Negative Transmissive
- Viewing Direction:** 6 O'clock
- IC Driver:** S6B0724 OR EQUIVALENT
- OPERATING TEMP.:** -20°C ---- 70°C
- STORAGE TEMP.:** -30°C ---- 80°C
- Interface:** Serial Interface
- Backlight Type:** White, Y/G Edge LED Optional

BLOCK DIAGRAM:

ELECTRICAL CHARACTERISTICS :



Item	Symbol	Test Condition	Standard Value			Unit
			Min	Typ	Max	
LCD Operating Voltage	V _{DD} -V _{SS}		2.7	3.0	3.3	V
Supply Voltage(White)	V _{LCD}		--	9.0	--	V
Supply Voltage(Y/G)	V _{LCD}		--	8.5	--	V
LCD Supply Current	I _{DD}		--	200	--	uA
Input Signal Voltage High	V _{IH}		0.8 V _{DD}	--	V _{DD}	
Input Signal Voltage Low	V _{IL}		0	--	0.2 V _{DD}	
Edge LED (White)	V _F		--	3.1	--	V
	I _F		--	80	--	mA
Edge LED (Y/G)	V _F		--	4.1	--	V
	I _F		--	80	--	mA

EXTERNAL DIMENSIONS :

Pin	1	2	3	4	5	6	7	8	9	10	11	12	13	14	15	16	17	18	19	20
Symbol	NC	V ₀	V ₄	V ₃	V ₂	V ₁	C2-	C2+	C1+	C1-	C3+	Vout	Vss	V _{DD}	SI	SCL	RS	/RES	/CS1	NC

