



**MULTI-INNO TECHNOLOGY CO., LTD.**

**www.multi-inno.com**

## **LCD MODULE SPECIFICATION**

**Model : MI1010KT-1**

This module uses ROHS material

**For Customer's Acceptance:**

Customer	
Approved	
Comment	

This specification may change without prior notice in order to improve performance or quality. Please contact Multi-Inno for updated specification and product status before design for this product or release of this order.

Revision	1.0
Engineering	
Date	2013-07-03
Our Reference	

## REVISION RECORD

[illegible]



# CONTENTS

- GENERAL INFORMATION
- EXTERNAL DIMENSIONS
- ABSOLUTE MAXIMUM RATINGS
- ELECTRICAL CHARACTERISTICS
- BACKLIGHT CHARACTERISTICS
- ELECTRO-OPTICAL CHARACTERISTICS
- INTERFACE DESCRIPTION
- APPLICATION NOTES
- RELIABILITY TEST
- INSPECTION CRITERION
- PRECAUTIONS FOR USING LCD MODULES
- PRIOR CONSULT MATTER

**■ GENERAL INFORMATION**

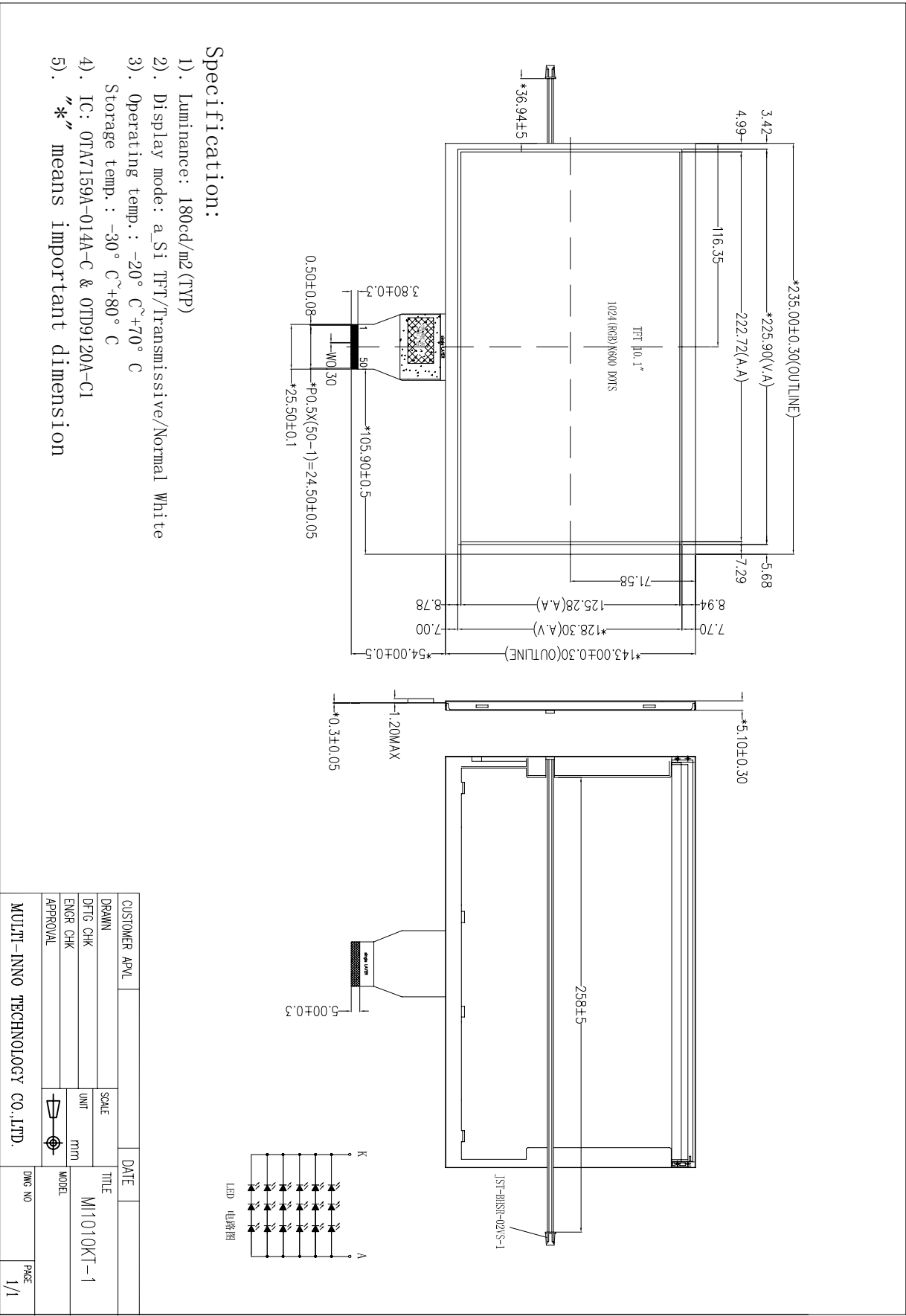
Item	Contents	Unit
LCD type	TFT/Transmissive/Normally white	/
Size	10.1	Inch
Viewing direction	12:00	O' Clock
Gray scale inversion direction	6:00	O' Clock
LCM (W × H × D )	235.0×143.0×5.1	mm <sup>3</sup>
Active area (W×H)	222.72×125.28	mm <sup>2</sup>
Pixel pitch (W×H)	0.2175×0.2088	mm <sup>2</sup>
Number of dots	1024 (RGB) × 600	/
Driver IC	OTA7159A-014A-C & OTD9120A-C1	/
Backlight type	18 LEDs	/
Interface type	24 bits RGB	/
Color depth	16.7M	/
Pixel configuration	R.G.B stripe	/
Backlight power consumption	TBD	W
Panel power consumption	TBD	W
Input voltage	3.3	V
With/Without TSP	Without TSP	/
Weight	TBD	g

Note 1:Viewing direction for best image quality is different from TFT definition, there is a 180 degree shift.

Note 2 : RoHS compliant;

Note 3: LCM weight tolerance: ± 5% .

# EXTERNAL DIMENSIONS



## ■ABSOLUTE MAXIMUM RATINGS

Parameter	Symbol	Min	Max	Unit
Digital supply voltage	DVDD	-0.3	5.0	V
TFT gate on voltage	VGH	-0.3	40	V
TFT gate off voltage	VGL	-20	-0.3	V
Analog power supply voltage	AVDD	-0.5	15	V
Operating temperature	T <sub>OP</sub>	-20	70	°C
Storage temperature	T <sub>ST</sub>	-30	80	°C
Humidity	RH	-	90%(Max60°C)	RH

## ■ELECTRICAL CHARACTERISTICS

### DC CHARACTERISTICS

Parameter	Symbol	Min	Typ	Max	Unit
Digital supply voltage	DVDD	3.0	3.3	3.6	V
TFT gate on voltage	VGH	20	21	22	V
TFT gate off voltage	VGL	-6.0	-5.5	-5.0	V
TFT common electrode voltage	VCOM	3.6	3.8	4.0	V
Analog power supply voltage	AVDD	10.65	10.85	11.05	V

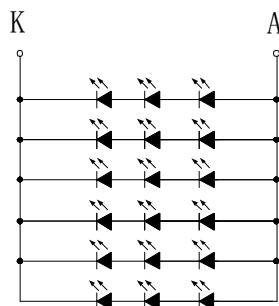
## ■ BACKLIGHT CHARACTERISTICS

Item	Symbol	Min.	Typ.	Max.	Unit	Condition
Forward voltage	V <sub>f</sub>	-	9.9	-	V	
Forward current	I <sub>f</sub>	-	120	-	mA	
Operating life time	-	-	25000	-	Hrs	

Note (1)Permanent damage may occur to the LCD module if beyond this specification,Functional operation should be restricted to the conditions descrtbed under normal operating conditions.

(2)Ta=25±2°C

(3)Test condition:LED current 120mA



LED 电路图

## ■ELECTRO-OPTICAL CHARACTERISTICS

Item	Symbol	Condition	Min	Typ	Max	Unit	Remark	Note
Response time	Tr+Tf	$\theta=0^\circ$ $\varnothing=0^\circ$ $T_a=25^\circ\text{C}$	-	8	-	ms	FIG 1.	4
Contrast ratio	Cr		-	600	-	---	FIG 2.	1
Luminance uniformity	$\delta$ WHITE		70	75	-	%	FIG 2.	3
Surface Luminance	Lv		-	180	-	cd/m <sup>2</sup>	FIG 2.	2
Viewing angle range	$\theta$	$\varnothing = 90^\circ$	-	30	-	deg	FIG 3.	6
		$\varnothing = 270^\circ$	-	45	-	deg	FIG 3.	
		$\varnothing = 0^\circ$	-	45	-	deg	FIG 3.	
		$\varnothing = 180^\circ$	-	45	-	deg	FIG 3.	
CIE (x, y) chromaticity	Red	x	-	-	-	FIG 2.		5
		y	-	-	-			
	Green	x	-	-	-			
		y	-	-	-			
	Blue	x	-	-	-			
		y	-	-	-			
	White	x	0.24	0.29	0.34			
		y	0.28	0.33	0.38			

Note 1. Contrast Ratio(CR) is defined mathematically as For more information see FIG 2.

$$\text{Contrast Ratio} = \frac{\text{Average Surface Luminance with all white pixels (P1, P2, P3, P4, P5)}}{\text{Average Surface Luminance with all black pixels (P1, P2, P3, P4, P5)}}$$

Note 2. Surface luminance is the LCD surface from the surface with all pixels displaying white. For more information see FIG 2.

$$L_v = \text{Average Surface Luminance with all white pixels (P1, P2, P3, P4, P5)}$$

Note 3. The uniformity in surface luminance ,  $\delta$  WHITE is determined by measuring luminance at each test position 1 through 5, and then dividing the maximum luminance of 5 points luminance by minimum luminance of 5 points luminance. For more information see FIG 2.

$$\delta \text{ WHITE} = \frac{\text{Minimum Surface Luminance with all white pixels (P1, P2, P3, P4, P5)}}{\text{Maximum Surface Luminance with all white pixels (P1, P2, P3, P4, P5)}}$$

Note 4. Response time is the time required for the display to transition from White to black(Rise Time, Tr) and from black to white(Decay Time, Tf). For additional information see FIG 1. The test equipment is Autronic-Melchers's ConoScope. Series.

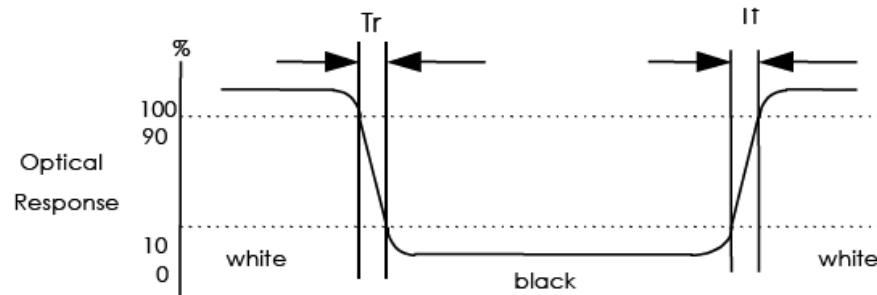
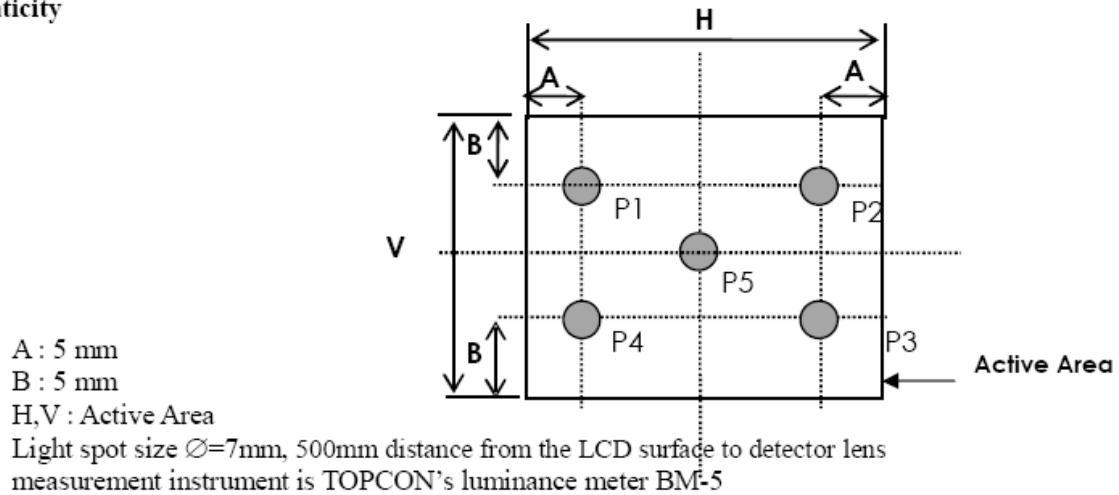
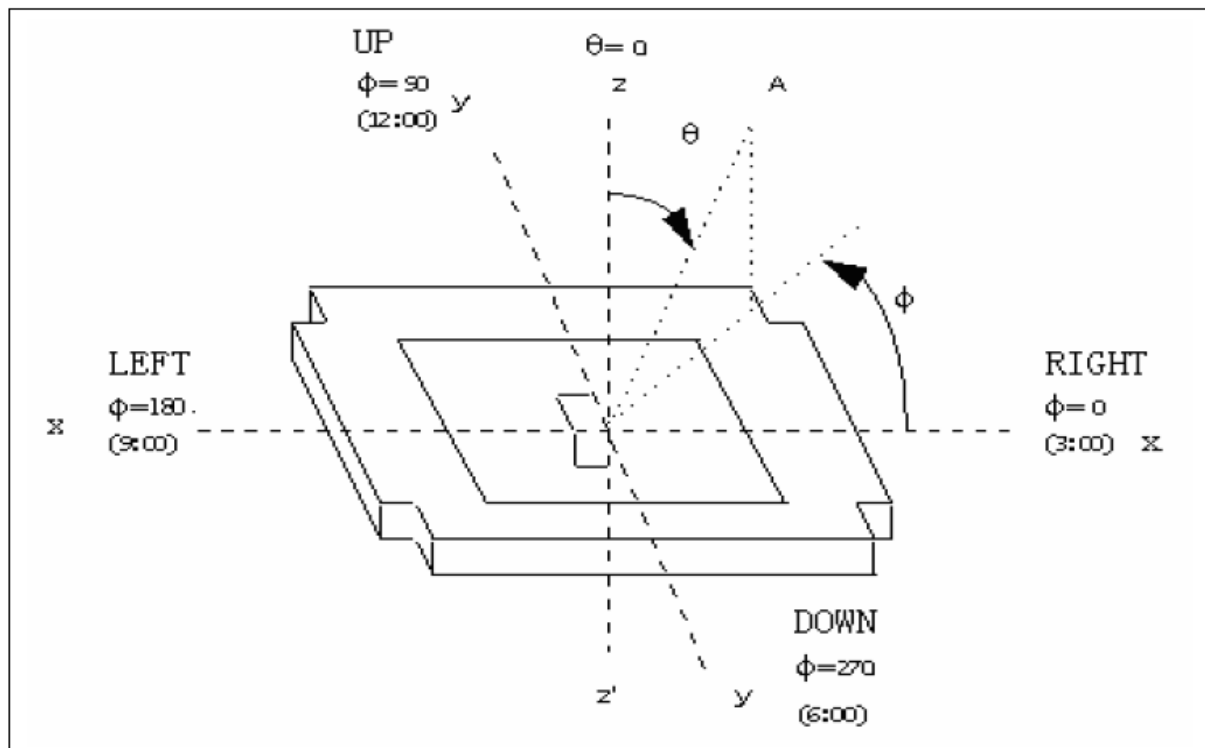
Note 5. CIE (x, y) chromaticity, The x, y value is determined by measuring luminance at each test position 1 through 5, and then make average value.

Note 6. Viewing angle is the angle at which the contrast ratio is greater than 2. For TFT module the contrast ratio is greater than 10. The angles are determined for the horizontal or x axis and the vertical or y axis with respect to the z axis which is normal to the LCD surface. For more information see FIG 3.

Note 7. For viewing angle and response time testing, the testing data is base on Autronic-Melchers's ConoScope. Series Instruments For contrast ratio, Surface Luminance, Luminance uniformity, CIE The test data is base on TOPCON's BM-5 photo detector.

**FIG. 1 The definition of Response Time**

The response time is defined as the following figure and shall be measured by switching the input signal for “black” and “white”.


**FIG. 2 Measuring method for Contrast ratio, surface luminance, Luminance uniformity , CIE (x, y) chromaticity**

**FIG. 3 The definition of viewing angle**




**■ INTERFACE DESCRIPTION**

Pin No.	Symbol	Function
1	NC	No connection
2	NC	No connection
3	NC	No connection
4	NC	No connection
5	GND	Ground
6	VCOM	VCOM signal
7	DVDD	Digital power
8	MODE	DE/SYNC Mode select (Note1)
9	DE	Data input Enable
10	VS	Vertical sync input
11	HS	Horizontal sync input
12	B7	Blue data
13	B6	Blue data
14	B5	Blue data
15	B4	Blue data
16	B3	Blue data
17	B2	Blue data
18	B1	Blue data
19	B0	Blue data
20	G7	Green data
21	G6	Green data
22	G5	Green data
23	G4	Green data
24	G3	Green data
25	G2	Green data

26	G1	Green data
27	G0	Green data
28	R7	Red data
29	R6	Red data
30	R5	Red data
31	R4	Red data
32	R3	Red data
33	R2	Red data
34	R1	Red data
35	R0	Red data
36	GND	Ground
37	DCLK	Clock input
38	GND	Ground
39	L/R	Left /Right Display Control(Note2)
40	U/D	Up /Down Display Control (Note3)
41	VGH	Positive Power for TFT
42	VGL	Negative Power for TFT
43	AVDD	Analog Power
44	RESET	Global rest pin
45	NC	No connection
46	VCOM	VCOM signal
47	DITHB	Dithering function (Note4)
48	GND	Ground
49	NC	No connection
50	NC	No connection

Note1:DE/SYNC mode select,Normally pull high.

When MODE=H,DE mode

When MODE=L,SYNC mode

Note2:Source Driver internal shift register is controlled by this pin as shown below: Normally pull high.

SHLR=H: SO1→SO2→SO3→⋯→SO1536 (Default)

SHLR=L: SO1536→SO1535→SO1534→⋯→SO1

- Note3: Gate Driver Up/down scan setting. Normally pull low.  
When UPDN=H, reverse scan.  
STV1 output vertical start pulse and UD pin output “H” to Gate driver  
When UPDN=L, normal scan. (Default)  
STV2 output vertical start pulse and UD pin output “L” to Gate driver
- Note4: Dithering function enable control. Normally pull low.  
When DITHER=H, Enable internal dithering function  
When DITHER=L, Disable internal dithering function

## ■ APPLICATION NOTES

### 1 Timing Conditions

#### DE MODE

Parameter		Value			Unit
		Min.	TYP.	MAX.	
DCLK Frequency		40	52	67	MHz
H Active	thd	1024			DCLK
H Total	th	1114	1344	1400	DCLK
HSYNC blanking		90	320	376	DCLK
V Active	tvd	600			H
V Total	tv	610	635	800	H
VSYNC blanking		10	35	200	H

#### HV MODE

##### H input timing

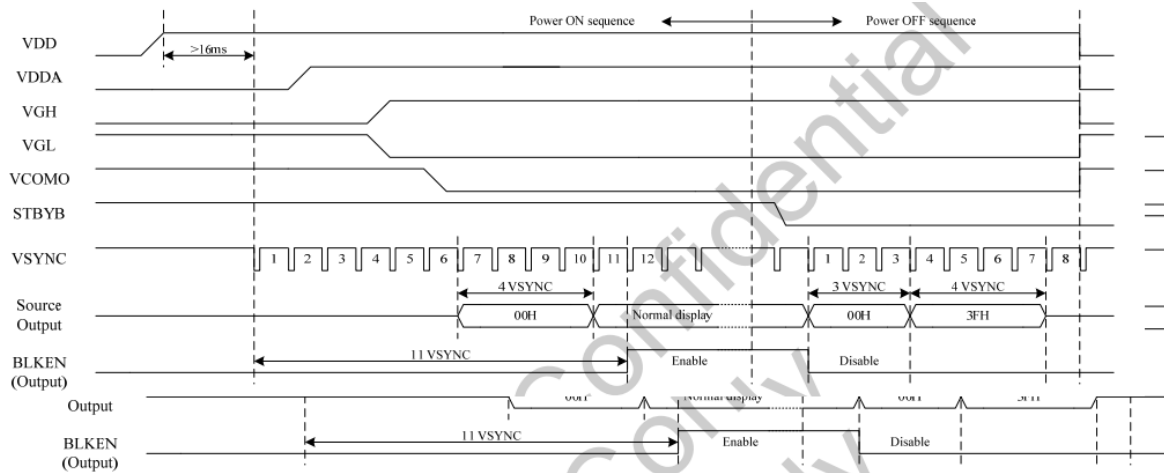
Parameter		Value			Unit
		Min.	TYP.	MAX.	
DCLK Frequency		45	52	63	MHz
H Active	thd	1024			DCLK
H Total	th	1200	1344	1400	DCLK
HSYNC blanking	thb	160	160	160	DCLK
HSYNC front porch	thfp	16	160	216	DCLK
HSYNC pulse width	thpw	1	-	140	DCLK

### V input timing

Parameter		Value			Unit
		Min.	TYP.	MAX.	
V Active	tv <sub>d</sub>	600			DCLK
V Total	tv <sub>b</sub>	624	635	750	DCLK
VS <sub>SYNC</sub> blanking	tv <sub>b</sub>	23	23	23	DCLK
VS <sub>SYNC</sub> front porch	tv <sub>fp</sub>	1	12	127	DCLK
VS <sub>SYNC</sub> pulse width	tv <sub>pw</sub>	1	-	20	DCLK

## 2 Power Sequence

To prevent the device damage from latch up, the power on/off sequence shown below must be followed.



**■ RELIABILITY TEST**

No.	Test Item	Test Condition	Inspection after test
1	High Temperature Storage	$80 \pm 2^{\circ}\text{C}$ /96 hours	
2	Low Temperature Storage	$-30 \pm 2^{\circ}\text{C}$ /96hours	
3	High Temperature Operating	$70 \pm 2^{\circ}\text{C}$ /96 hours	
4	Low Temperature Operating	$-20 \pm 2^{\circ}\text{C}$ /96 hours	
5	Temperature Cycle	$-20 \pm 2^{\circ}\text{C} \sim 25 \sim 70 \pm 2^{\circ}\text{C} \times 100\text{cycles}$ (30min.) (5min.) (30min.)	Non-operation
6	Damp Proof Test	$60^{\circ}\text{C} \pm 5^{\circ}\text{C} \times 90\%\text{RH}$ /96 hours	Operation
7	Vibration Test	Frequency: 8~33.3Hz Stroke : 1.3mm, Sweep:2.9G 33.3~400Hz 2 hours for each direction of X.Y. Z.(6 hours for total)	Non-operation JIS C7021,A-10 ConditionA:15minutes
8	Electrostatic Discharge	Contact= $\pm 4\text{KV}$ , class B Air= $\pm 8\text{KV}$ , class B	
9	Mechanical Shock	100G 6ms, $\pm X, \pm Y, \pm Z$ 3times for each direction	Non-operation JIS C7021,A-7 ConditionC
10	Vibration(With Carton)	Random Vibration: 0.015G*G/Hz from 5-200Hz, -6dB/Octave from 200-500Hz.	IEC68-34
11	Droop(With Carton)	Height:60 cm 1 corner,3 edges,6 surfaces	
12	Electro Static Discharge	$\pm 2\text{KV}$ ,Human Body Mode, 100pF/1500 $\Omega$	

## ■ INSPECTION CRITERION

This specification is made to be used as the standard acceptance/rejection criteria for Normal LCM Product.

### 1 Sample plan

Sampling plan according to GB/T2828.1-2003/ISO 2859-1: 1999 and ANSI/ASQC Z1.4-1993, normal level 2 and based on:

Major defect: AQL 0.65

Minor defect: AQL 1.5

### 2. Inspection condition

● Viewing distance for cosmetic inspection is about 30cm with bare eyes, and under an environment of 20~40W light intensity, all directions for inspecting the sample should be within 45° against perpendicular line. (Normal temperature 20~25°C and normal humidity 60±15%RH).

#### ● Driving voltage

The Vop value from which the most optimal contrast can be obtained near the specified Vop in the specification (Within ±0.5V of the typical value at 25°C.).

### 3. Definition of inspection zone in LCD.

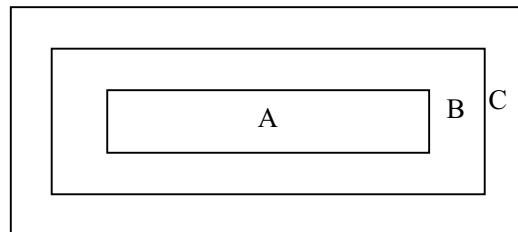


Fig.4

Zone A: character/Digit area

Zone B: viewing area except Zone A (ZoneA+ZoneB=minimum Viewing area)

Zone C: Outside viewing area (invisible area after assembly in customer's product)

Fig.4 Inspection zones in an LCD.

Note: As a general rule, visual defects in Zone C are permissible, when it is no trouble for quality and assembly of customer's product.

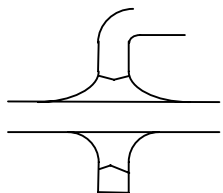
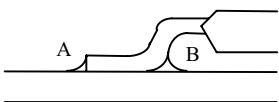
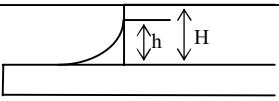
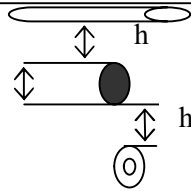
## 4. Inspection Standard

### 4.1 Major Defect

Item No	Items to be inspected	Inspection Standard	Classification of defects
4.1.1	All functional defects	1) No display 2) Display abnormally 3) Missing vertical, horizontal segment 4) Short circuit 5) Back-light no lighting, flickering and abnormal lighting.	Major
4.1.2	Missing	Missing component	
4.1.3	Outline dimension	Overall outline dimension beyond the drawing is not allowed.	

## 4.2 Cosmetic Defect

### 4.2.1 Module Cosmetic Criteria

No.	Item	Judgement Criterion	Partition
1	Difference in Spec.	None allowed	Major
2	Pattern peeling	No substrate pattern peeling and floating	Major
3	Soldering defects	No soldering missing No soldering bridge No cold soldering	Major Major Minor
4	Resist flaw on Printed Circuit Boards	visible copper foil ( $\varnothing 0.5\text{mm}$ or more) on substrate pattern	Minor
5	Accretion of metallic Foreign matter	No accretion of metallic foreign matters (Not exceed $\varnothing 0.2\text{mm}$ )	Minor Minor
6	Stain	No stain to spoil cosmetic badly	Minor
7	Plate discoloring	No plate fading, rusting and discoloring	Minor
8	Solder amount	a. Soldering side of PCB Solder to form a 'Filet' all around the lead. Solder should not hide the lead form perfectly. (too much) b. Components side (In case of 'Through Hole PCB')  Solder to reach the Components side of PCB.	Minor
	2. Flat packages	Either 'Toe' (A) or 'Seal' (B) of the lead to be covered by 'Filet'.  Lead form to be assume over solder.	Minor
	3. Chips	$(3/2) H \geq h \geq (1/2) H$ 	Minor
9	Solder ball/Solder splash	a. The spacing between solder ball and the conductor or solder pad $h \geq 0.13\text{mm}$ The diameter of solder ball $d \leq 0.15\text{mm}$ . b. The quantity of solder balls or solder Splashes isn't beyond 5 in $600\text{mm}^2$ . c. Solder balls/Solder splashes do not violate minimum electrical clearance. 	Minor Minor Major



		<p>d. Solder balls/Solder splashes must be entrapped/encapsulated Or attached to the metal surface .</p> <p>NOTE: Entrapped/encapsulated/attached is intended to mean that normal service environment of the product will not cause a solder ball to become dislodged.</p>	Minor
--	--	--	-------

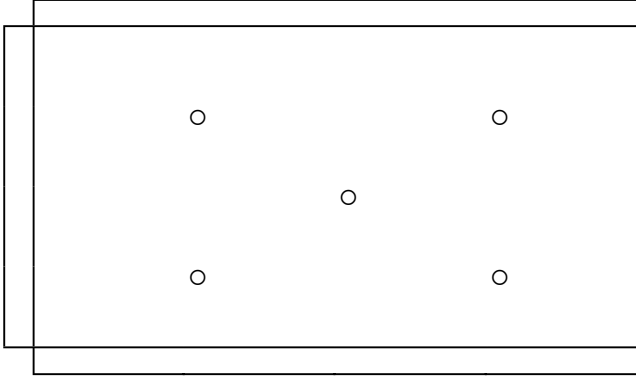
#### 4.2.2Cosmetic Criteria (Non-Operating)

No.	Defect	Judgment Criterion	Partition										
1	Spots	In accordance with <i>Screen Cosmetic Criteria (Operating) No.1.</i>	Minor										
2	Lines	In accordance with <i>Screen Cosmetic Criteria (Operating) No.2.</i>	Minor										
3	Bubbles in polarizer	<table><tr><th>Size : d mm</th><th>Acceptable Qty in active area</th></tr><tr><td>d ≤ 0.3</td><td>Disregard</td></tr><tr><td>0.3 &lt; d ≤ 1.0</td><td>3</td></tr><tr><td>1.0 &lt; d ≤ 1.5</td><td>1</td></tr><tr><td>1.5 &lt; d</td><td>0</td></tr></table>	Size : d mm	Acceptable Qty in active area	d ≤ 0.3	Disregard	0.3 < d ≤ 1.0	3	1.0 < d ≤ 1.5	1	1.5 < d	0	Minor
Size : d mm	Acceptable Qty in active area												
d ≤ 0.3	Disregard												
0.3 < d ≤ 1.0	3												
1.0 < d ≤ 1.5	1												
1.5 < d	0												
4	Scratch	In accordance with spots and lines operating cosmetic criteria. When the light reflects on the panel surface, the scratches are not to be remarkable.	Minor										
5	Allowable density	Above defects should be separated more than 30mm each other.	Minor										
6	Coloration	Not to be noticeable coloration in the viewing area of the LCD panels. Back-lit type should be judged with back-lit on state only.	Minor										
7	Contamination	Not to be noticeable.	Minor										



### 4. 2. 3 Cosmetic Criteria (Operating)

No.	Defect	Judgment Criterion	Partition																																												
1	Spots	<div>A) Clear</div> <table><thead><tr><th>Lcd size</th><th>Size : d mm</th><th>Acceptable Qty in active area</th></tr></thead><tbody><tr><td rowspan="4">Lcd size≤8.0'</td><td>d≤0.1</td><td>Disregard</td></tr><tr><td>0.1&lt;d≤0.2</td><td>6</td></tr><tr><td>0.2&lt;d≤0.3</td><td>2</td></tr><tr><td>0.3&lt;d</td><td>0</td></tr><tr><td rowspan="4">Lcd size&gt;8.0'</td><td>d≤0.1</td><td>Disregard</td></tr><tr><td>0.1&lt;d≤0.3</td><td>10</td></tr><tr><td>0.3&lt;d≤0.5</td><td>5</td></tr><tr><td>0.5&lt;d</td><td>0</td></tr></tbody></table> <div>Note : Including pin holes and defective dots which must be within one pixel size; Total defective point shall not exceed 6 pcs no more than 8 inch LCD and 10PCS for more than 8 inch LCD.</div> <div>B) Unclear</div> <table><thead><tr><th>Lcd size</th><th>Size : d mm</th><th>Acceptable Qty in active area</th></tr></thead><tbody><tr><td rowspan="4">Lcd size≤8.0'</td><td>d≤0.2</td><td>Disregard</td></tr><tr><td>0.2&lt;d≤0.5</td><td>6</td></tr><tr><td>0.5&lt;d≤0.7</td><td>2</td></tr><tr><td>0.7&lt;d</td><td>0</td></tr><tr><td rowspan="5">Lcd size &gt;8.0'</td><td>d≤0.2</td><td>Disregard</td></tr><tr><td>0.2&lt;d≤0.5</td><td>10</td></tr><tr><td>0.5&lt;d≤0.7</td><td>3</td></tr><tr><td>0.7&lt;d≤1.0</td><td>1</td></tr><tr><td>1.0&lt;d</td><td>0</td></tr></tbody></table> <div>Note : Total defective point shall not exceed 6 pcs for no more than 8 inch LCD and 10PCS for more than 8 inch LCD.</div>	Lcd size	Size : d mm	Acceptable Qty in active area	Lcd size≤8.0'	d≤0.1	Disregard	0.1<d≤0.2	6	0.2<d≤0.3	2	0.3<d	0	Lcd size>8.0'	d≤0.1	Disregard	0.1<d≤0.3	10	0.3<d≤0.5	5	0.5<d	0	Lcd size	Size : d mm	Acceptable Qty in active area	Lcd size≤8.0'	d≤0.2	Disregard	0.2<d≤0.5	6	0.5<d≤0.7	2	0.7<d	0	Lcd size >8.0'	d≤0.2	Disregard	0.2<d≤0.5	10	0.5<d≤0.7	3	0.7<d≤1.0	1	1.0<d	0	Minor
Lcd size	Size : d mm	Acceptable Qty in active area																																													
Lcd size≤8.0'	d≤0.1	Disregard																																													
	0.1<d≤0.2	6																																													
	0.2<d≤0.3	2																																													
	0.3<d	0																																													
Lcd size>8.0'	d≤0.1	Disregard																																													
	0.1<d≤0.3	10																																													
	0.3<d≤0.5	5																																													
	0.5<d	0																																													
Lcd size	Size : d mm	Acceptable Qty in active area																																													
Lcd size≤8.0'	d≤0.2	Disregard																																													
	0.2<d≤0.5	6																																													
	0.5<d≤0.7	2																																													
	0.7<d	0																																													
Lcd size >8.0'	d≤0.2	Disregard																																													
	0.2<d≤0.5	10																																													
	0.5<d≤0.7	3																																													
	0.7<d≤1.0	1																																													
	1.0<d	0																																													
2	Lines	<div>A) Clear</div> <div></div> <div>Note : ( ) - Acceptable Qty in active area L - Length (mm) W - Width (mm) ∞ - Disregard</div> <div>B) Unclear</div> <div></div> <div>'Clear' = The shade and size are not changed by V<sub>op</sub>. 'Unclear' = The shade and size are changed by V<sub>op</sub>.</div>	Minor																																												

3	Rubbing line	Not to be noticeable.	Minor
4	Allowable density	Above defects should be separated more than 10mm each other.	Minor
5	Rainbow	Not to be noticeable.	Minor
6	Dot size	To be 95% ~ 105% of the dot size (Typ.) in drawing. Partial defects of each dot (ex. pin-hole) should be treated as 'Spot'. (see <i>Screen Cosmetic Criteria (Operating) No.1</i> )	Minor
7	Uneven brightness (only back-lit type module)	<p>Uneven brightness must be <math>B_{MAX} / B_{MIN} \leq 2</math></p> <p>- <math>B_{MAX}</math> : Max. value by measure in 5 points</p> <p>- <math>B_{MIN}</math> : Min. value by measure in 5 points</p> <p>Divide active area into 4 vertically and horizontally.</p> <p>Measure 5 points shown in the following figure.</p>  <p>O : Measuring points</p>	Minor

Note :

- (1) Size :  $d = (\text{long length} + \text{short length}) / 2$
- (2) The limit samples for each item have priority.
- (3) Complex defects are defined item by item, but if the numbers of defects are defined in above table, the total number should not exceed 10.
- (4) In case of 'concentration', even the spots or the lines of 'disregarded' size should not allowed. Following three situations should be treated as 'concentration'.
  - 7 or over defects in circle of  $\varnothing 5\text{mm}$ .
  - 10 or over defects in circle of  $\varnothing 10\text{mm}$ .
  - 20 or over defects in circle of  $\varnothing 20\text{mm}$ .

## ■ PRECAUTIONS FOR USING LCD MODULES

### Handling Precautions

(1) The display panel is made of glass and polarizer. As glass is fragile. It tends to become or chipped during handling especially on the edges. Please avoid dropping or jarring. Do not subject it to a mechanical shock by dropping it or impact.

(2) If the display panel is damaged and the liquid crystal substance leaks out, be sure not to get any in your mouth. If the substance contacts your skin or clothes, wash it off using soap and water.

(3) Do not apply excessive force to the display surface or the adjoining areas since this may cause the color tone to vary. Do not touch the display with bare hands. This will stain the display area and degraded insulation between terminals (some cosmetics are determined to the polarizer).

(4) The polarizer covering the display surface of the LCD module is soft and easily scratched. Handle this polarizer carefully. Do not touch, push or rub the exposed polarizers with anything harder than an HB pencil lead (glass, tweezers, etc.). Do not put or attach anything on the display area to avoid leaving marks on. Condensation on the surface and contact with terminals due to cold will damage, stain or dirty the polarizer. After products are tested at low temperature they must be warmed up in a container before coming is contacting with room temperature air.

(5) If the display surface becomes contaminated, breathe on the surface and gently wipe it with a soft dry cloth. If it is heavily contaminated, moisten cloth with one of the following solvents

- Isopropyl alcohol
- Ethyl alcohol

Do not scrub hard to avoid damaging the display surface.

(6) Solvents other than those above-mentioned may damage the polarizer. Especially, do not use the following.

- Water
- Ketone
- Aromatic solvents

Wipe off saliva or water drops immediately, contact with water over a long period of time may cause deformation or color fading. Avoid contacting oil and fats.

(7) Exercise care to minimize corrosion of the electrode. Corrosion of the electrodes is accelerated by water droplets, moisture condensation or a current flow in a high-humidity environment.

(8) Install the LCD Module by using the mounting holes. When mounting the LCD module make sure it is free of twisting, warping and distortion. In particular, do not forcibly pull or bend the I/O cable or the backlight cable.

(9) Do not attempt to disassemble or process the LCD module.

(10) NC terminal should be open. Do not connect anything.

(11) If the logic circuit power is off, do not apply the input signals.

(12) Electro-Static Discharge Control, Since this module uses a CMOS LSI, the same careful attention should be paid to electrostatic discharge as for an ordinary CMOS IC. To prevent destruction of the elements by static electricity, be careful to maintain an optimum work environment.

- Before remove LCM from its packing case or incorporating it into a set, be sure the module and your body have the same electric potential. Be sure to ground the body when handling the LCD modules.

- Tools required for assembling, such as soldering irons, must be properly grounded. make certain the AC power source for the soldering iron does not leak. When using an electric screwdriver to attach LCM, the screwdriver should be of ground potentiality to minimize as much as possible any transmission of electromagnetic waves produced sparks coming from the commutator of the motor.

- To reduce the amount of static electricity generated, do not conduct assembling and other work under dry conditions. To reduce the generation of static electricity be careful that the air in the work is not too dried. A relative humidity of 50%-60% is recommended. As far as possible make the electric potential of your work clothes and that of the work bench the ground potential

- The LCD module is coated with a film to protect the display surface. Exercise care when peeling off this protective film since static electricity may be generated

(13) Since LCM has been assembled and adjusted with a high degree of precision, avoid applying excessive shocks to the module or making any alterations or modifications to it.

- Do not alter, modify or change the shape of the tab on the metal frame.
- Do not make extra holes on the printed circuit board, modify its shape or change the positions of components to be attached.
- Do not damage or modify the pattern writing on the printed circuit board.
- Absolutely do not modify the zebra rubber strip (conductive rubber) or heat seal connector.
- Except for soldering the interface, do not make any alterations or modifications with a soldering iron.
- Do not drop, bend or twist LCM.

### **Storage Precautions**

When storing the LCD modules, the following precaution is necessary.

- (1) Store them in a sealed polyethylene bag. If properly sealed, there is no need for the dessicant.
- (2) Store them in a dark place. Do not expose to sunlight or fluorescent light, keep the temperature between 0°C and 35°C.
- (3) The polarizer surface should not come in contact with any other objects. (We advise you to store them in the container in which they were shipped).

### **Others**

Liquid crystals solidify under low temperature (below the storage temperature range) leading to defective orientation or the generation of air bubbles (black or white). Air bubbles may also be generated if the module is subject to a low temperature.

If the LCD modules have been operating for a long time showing the same display patterns, the display patterns may remain on the screen as ghost images and a slight contrast irregularity may also appear. A normal operating status can be regained by suspending use for some time. It should be noted that this phenomenon does not adversely affect performance reliability.

To minimize the performance degradation of the LCD modules resulting from destruction caused by static electricity etc., exercise care to avoid holding the following sections when handling the modules.

- Exposed area of the printed circuit board.
- Terminal electrode sections.

## Handling precaution for LCM

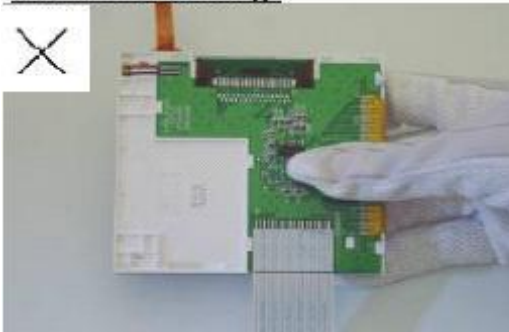
LCM is easy to be damaged.  
Please note below and be careful for handling!

### Correct handling:

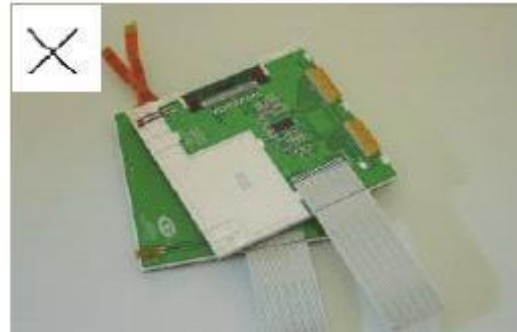


As above picture, please handle with anti-static gloves around LCM edges.

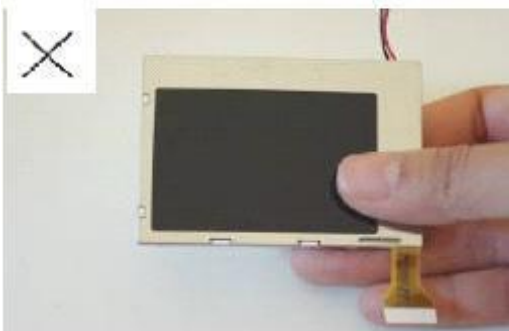
### Incorrect handling:



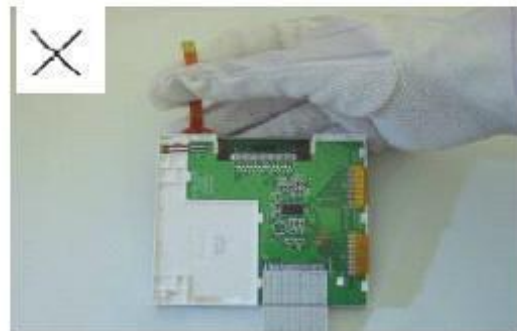
Please don't touch IC directly.



Please don't stack LCM.



Please don't hold the surface of panel.

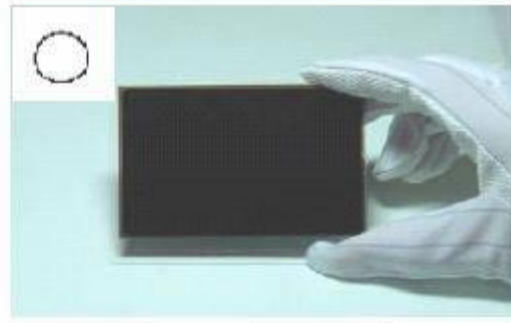


Please don't stretch interface of output, such as FPC cable.

## Handling precaution for LCD

LCD is easy to be damaged.  
Please note below and be careful for handling!

### Correct handling:

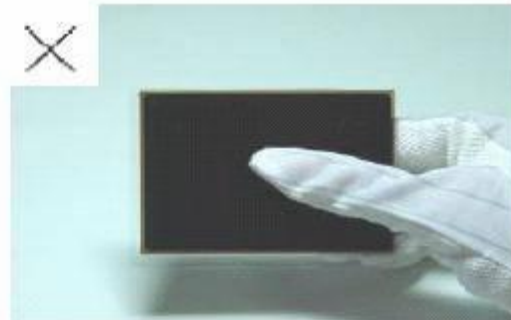


As above photo, please handle with anti-static gloves around LCD edges.

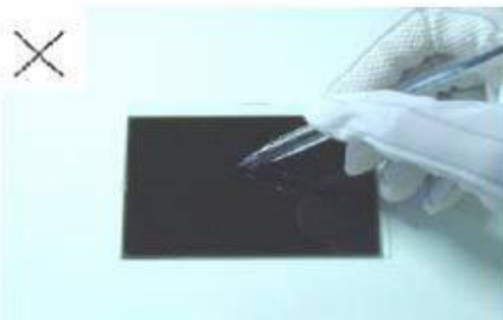
### Incorrect handling:



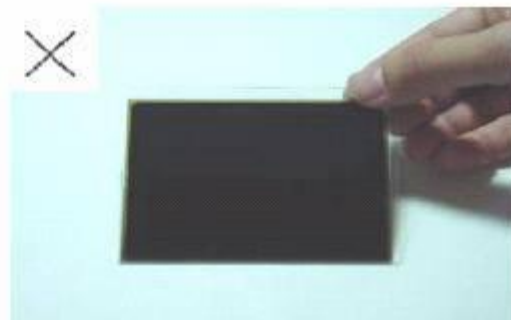
Please don't stack the LCDS.



Please don't hold the surface of LCD.



Please don't operate with sharp stick such as pens.



Please don't touch ITO glass without anti-static gloves.



## Storage Precautions

When storing the LCD modules, the following precaution is necessary.

- (1) Store them in a sealed polyethylene bag. If properly sealed, there is no need for the dessicant.
- (2) Store them in a dark place. Do not expose to sunlight or fluorescent light, keep the temperature between 0°C and 35°C, and keep the relative humidity between 40%RH and 60%RH.
- (3) The polarizer surface should not come in contact with any other objects. (We advise you to store them in the anti-static electricity container in which they were shipped.

### Others

Liquid crystals solidify under low temperature (below the storage temperature range) leading to defective orientation or the generation of air bubbles (black or white). Air bubbles may also be generated if the module is subject to a low temperature.

If the LCD modules have been operating for a long time showing the same display patterns, the display patterns may remain on the screen as ghost images and a slight contrast irregularity may also appear. A normal operating status can be regained by suspending use for some time. It should be noted that this phenomenon does not adversely affect performance reliability.

To minimize the performance degradation of the LCD modules resulting from destruction caused by static electricity etc., exercise care to avoid holding the following sections when handling the modules.

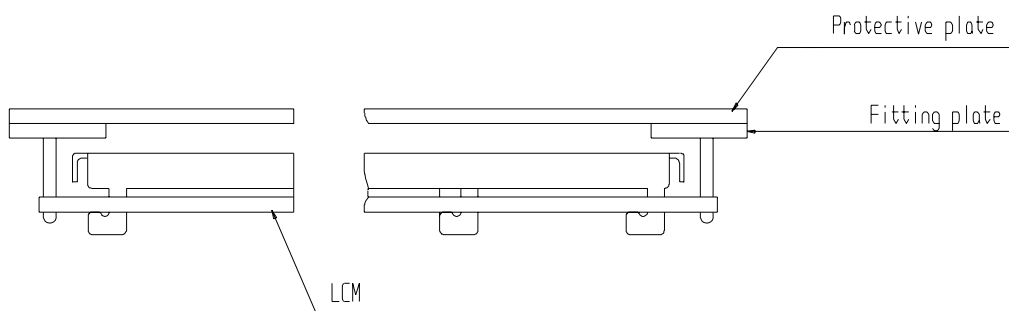
- Exposed area of the printed circuit board.
- Terminal electrode sections.

## USING LCD MODULES

### Installing LCD Modules

The hole in the printed circuit board is used to fix LCM as shown in the picture below. Attend to the following items when installing the LCM.

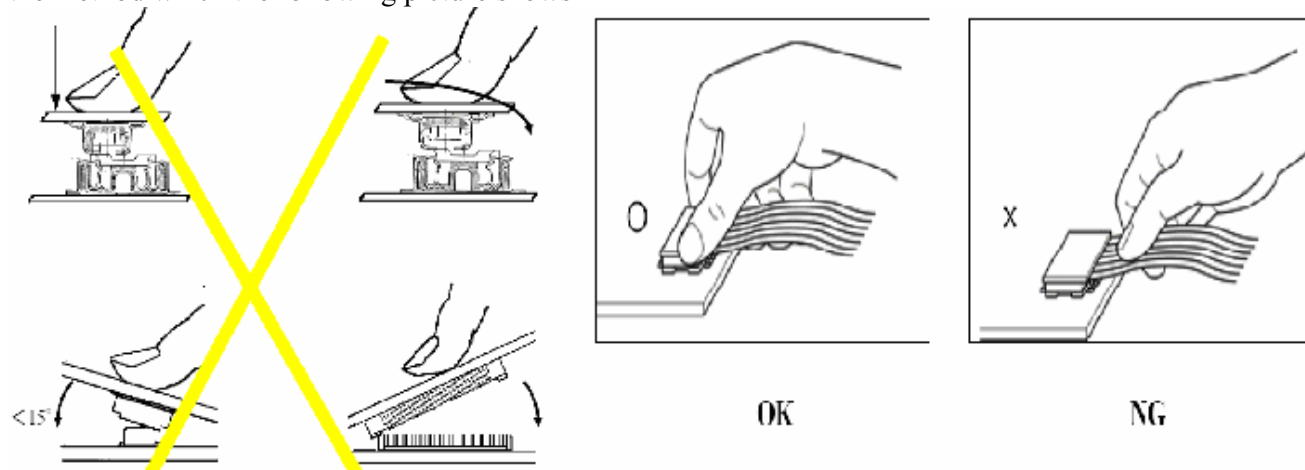
- (1) Cover the surface with a transparent protective plate to protect the polarizer and LC cell.



- (2) When assembling the LCM into other equipment, the spacer to the bit between the LCM and the fitting plate should have enough height to avoid causing stress to the module surface, refer to the individual specifications for measurements. The measurement tolerance should be  $\pm 0.1\text{mm}$ .

### Precaution for assemble the module with BTB connector:

Please note the position of the male and female connector position, don't assemble or assemble like the method which the following picture shows



## Precaution for soldering to the LCM

	Hand soldering	Machine drag soldering	Machine press soldering
No ROHS product	290°C ~350°C. Time : 3-5S.	330°C ~350°C. Speed : 4-8 mm/s.	300°C ~330°C. Time : 3-6S. Press: 0.8~1.2Mpa
ROHS product	340°C ~370°C. Time : 3-5S.	350°C ~370°C. Time : 4-8 mm/s.	330°C ~360°C. Time : 3-6S. Press: 0.8~1.2Mpa

(1) If soldering flux is used, be sure to remove any remaining flux after finishing to soldering operation. (This does not apply in the case of a non-halogen type of flux.) It is recommended that you protect the LCD surface with a cover during soldering to prevent any damage due to flux spatters.

(2) When soldering the electroluminescent panel and PC board, the panel and board should not be detached more than three times. This maximum number is determined by the temperature and time conditions mentioned above, though there may be some variance depending on the temperature of the soldering iron.

(3) When remove the electroluminescent panel from the PC board, be sure the solder has completely melted, the soldered pad on the PC board could be damaged.

## Precautions for Operation

(1) Viewing angle varies with the change of liquid crystal driving voltage (VLCD). Adjust VLCD to show the best contrast.

(2) It is an indispensable condition to drive LCD's within the specified voltage limit since the higher voltage then the limit cause the shorter LCD life. An electrochemical reaction due to direct current causes LCD's undesirable deterioration, so that the use of direct current drive should be avoided.

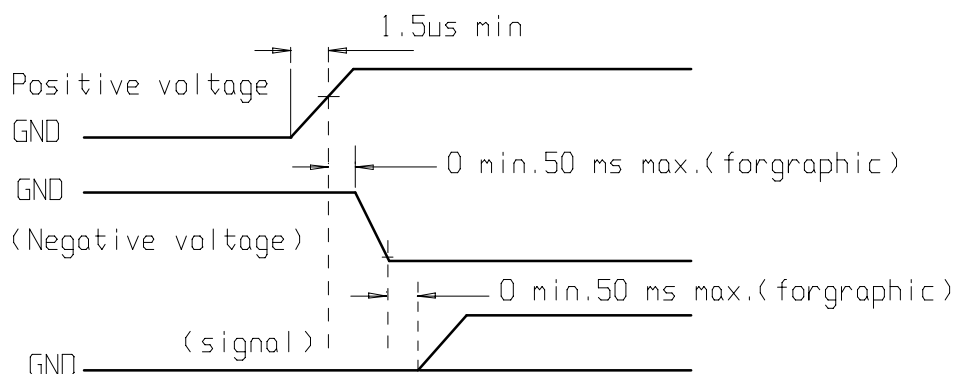
(3) Response time will be extremely delayed at lower temperature than the operating temperature range and on the other hand at higher temperature LCD's show dark color in them. However those phenomena do not mean malfunction or out of order with LCD's, Which will come back in the specified operating temperature.

(4) If the display area is pushed hard during operation, the display will become abnormal. However, it will return to normal if it is turned off and then back on.

(5) A slight dew depositing on terminals is a cause for electro-chemical reaction resulting in terminal open circuit. Usage under the maximum operating temperature, 50%RH or less is required.

(6) Input each signal after the positive/negative voltage becomes stable.

(7) Please keep the temperature within specified range for use and storage. Polarization degradation, bubble generation or polarizer peel-off may occur with high temperature and high humidity.





**Safety**

(1) It is recommended to crush damaged or unnecessary LCDs into pieces and wash them off with solvents such as acetone and ethanol, which should later be burned.

(2) If any liquid leaks out of a damaged glass cell and comes in contact with the hands, wash off thoroughly with soap and water.

**Limited Warranty**

Unless agreed between Multi-Inno and customer, Multi-Inno will replace or repair any of its LCD modules which are found to be functionally defective when inspected in accordance with Multi-Inno LCD acceptance standards (copies available upon request) for a period of one year from date of production. Cosmetic/visual defects must be returned to Multi-Inno within 90 days of shipment. Confirmation of such date shall be based on data code on product. The warranty liability of Multi-Inno limited to repair and/or replacement on the terms set forth above. Multi-Inno will not be responsible for any subsequent or consequential events.

**Return LCM under warranty**

No warranty can be granted if the precautions stated above have been disregarded. The typical examples of violations are :

- Broken LCD glass.
- PCB eyelet is damaged or modified.
- PCB conductors damaged.
- Circuit modified in any way, including addition of components.
- PCB tampered with by grinding, engraving or painting varnish.
- Soldering to or modifying the bezel in any manner.

Module repairs will be invoiced to the customer upon mutual agreement. Modules must be returned with sufficient description of the failures or defects. Any connectors or cable installed by the customer must be removed completely without damaging the PCB eyelet, conductors and terminals.

**■ PRIOR CONSULT MATTER**

- 1.①For Multi-Inno standard products, we keep the right to change material, process ... for improving the product property without notice on our customer.  
②For OEM products, if any change needed which may affect the product property, we will consult with our customer in advance.
2. If you have special requirement about reliability condition, please let us know before you start the test on our samples.