



FORMIKE ELECTRONIC CO.,LTD

PRODUCT SPECIFICATION

TFT LCD MODULE

MODEL : KWH057TG06-F01 Ver 1.0

【 ◆ 】 Preliminary Specification

【 】 Finally Specification

CUSTOMER'S APPROVAL	
SIGNATURE:	DATE:

APPROVED BY	PM REVIEWD	PD REVIEWD	PREPARED BY
Kam	/	Stephen	Roy

Prepared By :

FORMIKE ELECTRONIC CO.,LTD

Address :Room A818 New Energy Building, NanHai Road, NanShan District, ShenZhen, China. 518054

TEL:(86) 755 88306921,88306931 FAX:(86) 755 88304615

Http:// www.wandisplay.com

- This specification is subject to change without notice.Please contact FORMIKE or it's representative before designing your product based on this specification.

**1. General Specifications**

	Feature	Spec
Display Spec.	Size	5.7 inch
	Resolution	640(RGB) x 480
	Interface	RGB 18 bits
	Color Depth	262K
	Technology Type	a-Si
	Pixel Pitch (mm)	0.180x0.180
	Pixel Configuration	R.G.B. Vertical Stripe
	Display Mode	With Normally White
	Surface Treatment(Up Polarizer)	Anti-Glare(3H)
	Viewing Direction	6 o'clock
	Gray Scale Inversion Direction	12 o'clock
	LCM (W x H x D) (mm)	144.00x104.60x12.30
	Mechanical Characteristics	Active Area(mm)
With /Without TSP		Without TSP
Weight (g)		TBD
LED Numbers		21 LEDs

Note 1: Viewing direction for best image quality is different from TFT definition, there is a 180 degree shift.

Note 2: Requirements on Environmental Protection: Q/S0002

Note 3: LCM weight tolerance: $\pm 5\%$



2. Input/Output Terminals

2.1 CN1 pin assignment (Signal interface)

Connector type: 089H33-000100-G2-R (STARCONN)

No	Symbol	I/O	Description	Comment
1	GND	P	Ground	
2	CK	I	Dot clock. Latch data at falling edge of CK.	
3	Hsync	I	Horizontal sync signal in SYNC mode. Pull low or floating when DE mode.	
4	Vsync	I	Vertical sync signal in SYNC mode. Pull low or floating when DE mode.	
5	GND	P	Ground	
6	R0	I	Red data (LSB)	
7	R1	I	Red data	
8	R2	I	Red data	
9	R3	I	Red data	
10	R4	I	Red data	
11	R5	I	Red data (MSB)	
12	GND	P	Ground	
13	G0	I	Green data(LSB)	
14	G1	I	Green data	
15	G2	I	Green data	
16	G3	I	Green data	
17	G4	I	Green data	
18	G5	I	Green data(MSB)	
19	GND	P	Ground	
20	B0	I	Blue data(LSB)	
21	B1	I	Blue data	
22	B2	I	Blue data	
23	B3	I	Blue data	
24	B4	I	Blue data	
25	B5	I	Blue data(MSB)	
26	GND	P	Ground	
27	ENAB		This pin must pull high when SYNC mode.	
28	VCC	P	Power supply	
29	VCC	P	Power supply	
30	R/L	I	Set horizontal scan direction: Low/NC: left to right; High: right to left	
31	U/D	I	Set vertical scan direction: High/NC: up to down; Low: down to up	
32	NC	-	No connection	
33	GND	P	Ground	

Note1: I/O definition:

I----Input O----Output P----Power/Ground

Note2: CN1 Matching FPC type: 33 pin, pitch: 0.5mm, height: 0.3mm.

Table 2.1 CN1 pin assignment



2.2 CN2 pin assignment (Backlight interface)

Connector type: SHLP-06V-S-B (JST)

No	Symbol	I/O	Description	Comment
1	AN1	P	LED Anode Terminal	Red
2	AN2	P	LED Anode Terminal	Red
3	AN3	P	LED Anode Terminal	Red
4	CA1	P	LED Cathode Terminal	White
5	CA2	P	LED Cathode Terminal	Blue
6	CA3	P	LED Cathode Terminal	Black

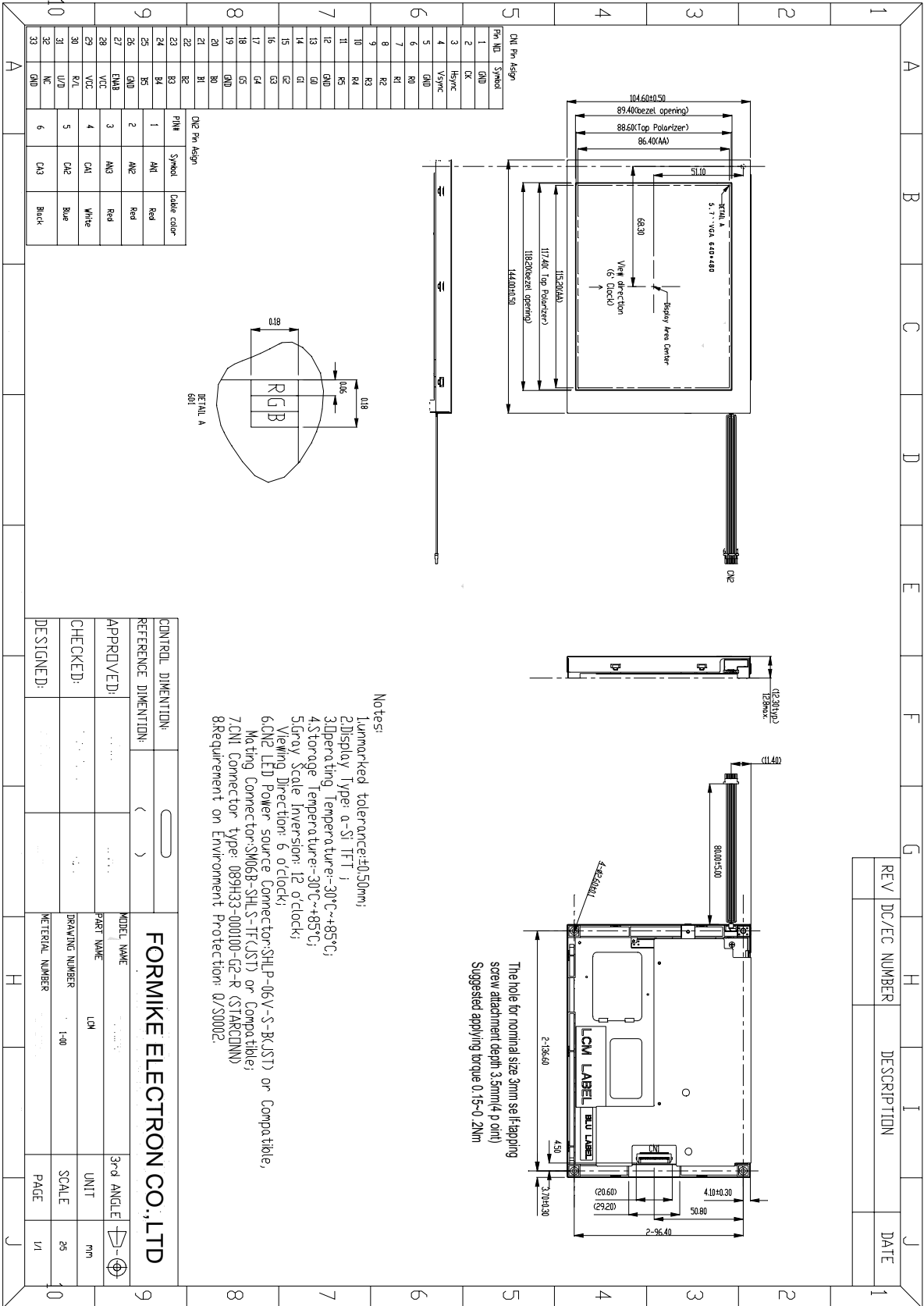
Note1: CN2 Matching Connector type: SM06B-SHLS-TF (JST)

Note2:P: Power/GND; I: input pin; I/O: input or output pin;

Table 2.2 CN2 pin assignment



3. Mechanical Drawing



- Notes:
1. Unmarked tolerance: ±0.50mm;
 2. Display Type: a-Si TFT;
 3. Operating Temperature: -30°C ~ +85°C;
 4. Storage Temperature: -30°C ~ +85°C;
 5. Gray Scale Inversion: 12 o'clock;
 6. View direction: 6 o'clock;
 7. Matching Connector: SHLP-06V-S-BK(JST) or Compatible;
 8. Matching Connector type: 089H33-000100-02-R (STARCONN);
 9. Requirement on Environment Protection: 0/S3002.

The hole for nominal size 3mm self-tapping screw attachment depth 3.5mm(4 p oint)
 Suggested applying torque 0.15~0.2Nm

CONTROL DIMENTION:	()	MODEL NAME	LCM	3rd ANGLE	UNIT	mm
REFERENCE DIMENTION:	()	PART NAME	LCM	SCALE	25	
APPROVED:		DRAWING NUMBER	1-40	PAGE	1/1	
CHECKED:		MATERIAL NUMBER				
DESIGNED:						

FORMIKE ELECTRON CO.,LTD

REV	DC/EC NUMBER	DESCRIPTION	DATE